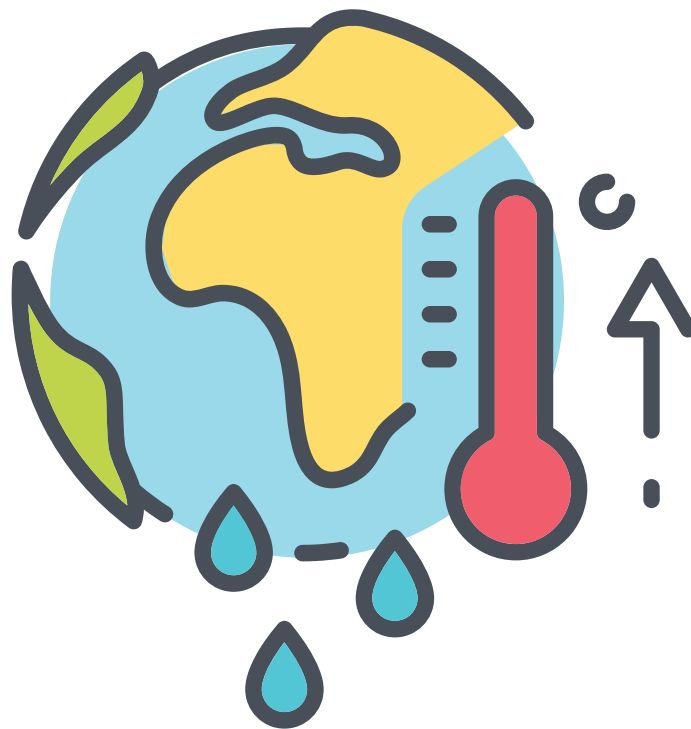


CLIMATE CHANGE

FACTS



**CLIMATE CHANGE IS THE
PROCESS OF THE PLANET
WARMING UP**

01

#CLIMATEACTION

CLIMATE CHANGE

FACTS



CLIMATE CHANGE IS THE PROCESS OF THE PLANET WARMING UP

Climate change is the long-term changes of temperature and typical weather patterns in an area. It is a natural process, but human activities are speeding it up at a pace that is too fast for life on earth to understand and adjust to these changes.

01



Flanders
State of the Art



WILDTRUST™

CLIMATE CHANGE

FACTS



URBANISATION

2a

#CLIMATEACTION

CLIMATE CHANGE

FACTS



URBANISATION

Urbanisation is when large numbers of people become permanently concentrated in relatively small areas forming cities.

2a



Flanders
State of the Art



WILDTRUST™

CLIMATE CHANGE

FACTS



**INCREASING
TEMPERATURES**

2b

#CLIMATEACTION

CLIMATE CHANGE

FACTS



INCREASING TEMPERATURES

Increasing temperatures (linked to climate change) are caused by human activities like the burning of coal oil and gas - i.e. when people drive their cars they are burning gas and oil which produces fumes that are harmful to the environment.

2b



Flanders
State of the Art



WILDTRUST™

CLIMATE CHANGE

FACTS



DEFORESTATION

2c

#CLIMATEACTION

CLIMATE CHANGE

FACTS



DEFORESTATION

Deforestation is when people cut down large numbers of trees in their natural environment. Trees take in carbon dioxide and release oxygen during photosynthesis. When trees are cut down and burned or allowed to rot, their stored carbon is released into the air as carbon dioxide.

This is how deforestation and forest degradation contribute to global warming.

2c



Flanders
State of the Art



WILDTRUST™

CLIMATE CHANGE

FACTS



**POOR FARMING
PRACTICES**

2d

#CLIMATEACTION

CLIMATE CHANGE

FACTS



POOR **FARMING** PRACTICES

Poor farming practices lead to climate change i.e. heavy use of fertilizers and pesticides, overgrazing, planting the same type of crop in the same area of land many times.

2d



Flanders
State of the Art



WILDTRUST™

CLIMATE CHANGE

FACTS



HUMAN ACTIVITIES SPEED
UP CLIMATE CHANGE

03

#CLIMATEACTION

CLIMATE CHANGE

FACTS



HUMAN ACTIVITIES SPEED UP CLIMATE CHANGE

Human-driven changes in land use and land cover such as deforestation, urbanisation, and shifts in vegetation patterns alter the climate.

03



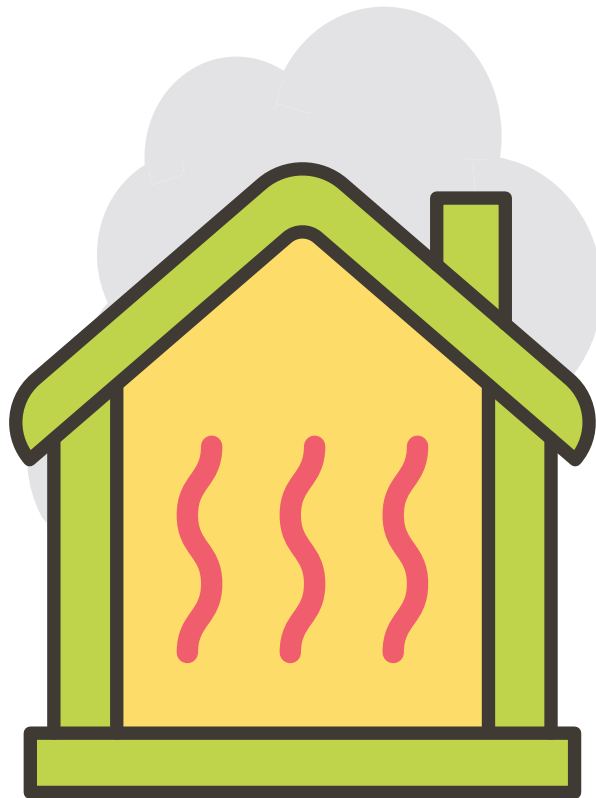
Flanders
State of the Art



WILDTRUST™

CLIMATE CHANGE

FACTS



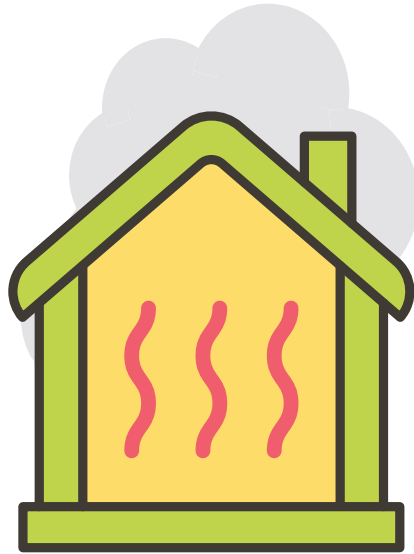
**GREENHOUSE GASES ARE
MAJOR CONTRIBUTORS
TO CLIMATE CHANGE**

04

#CLIMATEACTION

CLIMATE CHANGE

FACTS



GREENHOUSE GASES ARE MAJOR CONTRIBUTORS TO CLIMATE CHANGE

Greenhouse gases are gases in the earth's atmosphere that trap heat. They let sunlight pass through the atmosphere, but they trap the heat from leaving the atmosphere - this is called the greenhouse effect. Examples of these greenhouse gases are carbon dioxide and methane.

04



Flanders
State of the Art



WILDTRUST™

CLIMATE CHANGE

FACTS



GLOBAL WARMING
IS A DIRECT RESULT OF
CLIMATE CHANGE

05

#CLIMATEACTION

CLIMATE CHANGE

FACTS



GLOBAL WARMING IS A DIRECT RESULT OF CLIMATE CHANGE

Global warming (the change in the temperature patterns of the earth) is caused mainly by human activities changing the balance (harmony) of the natural functions of the environment.

05